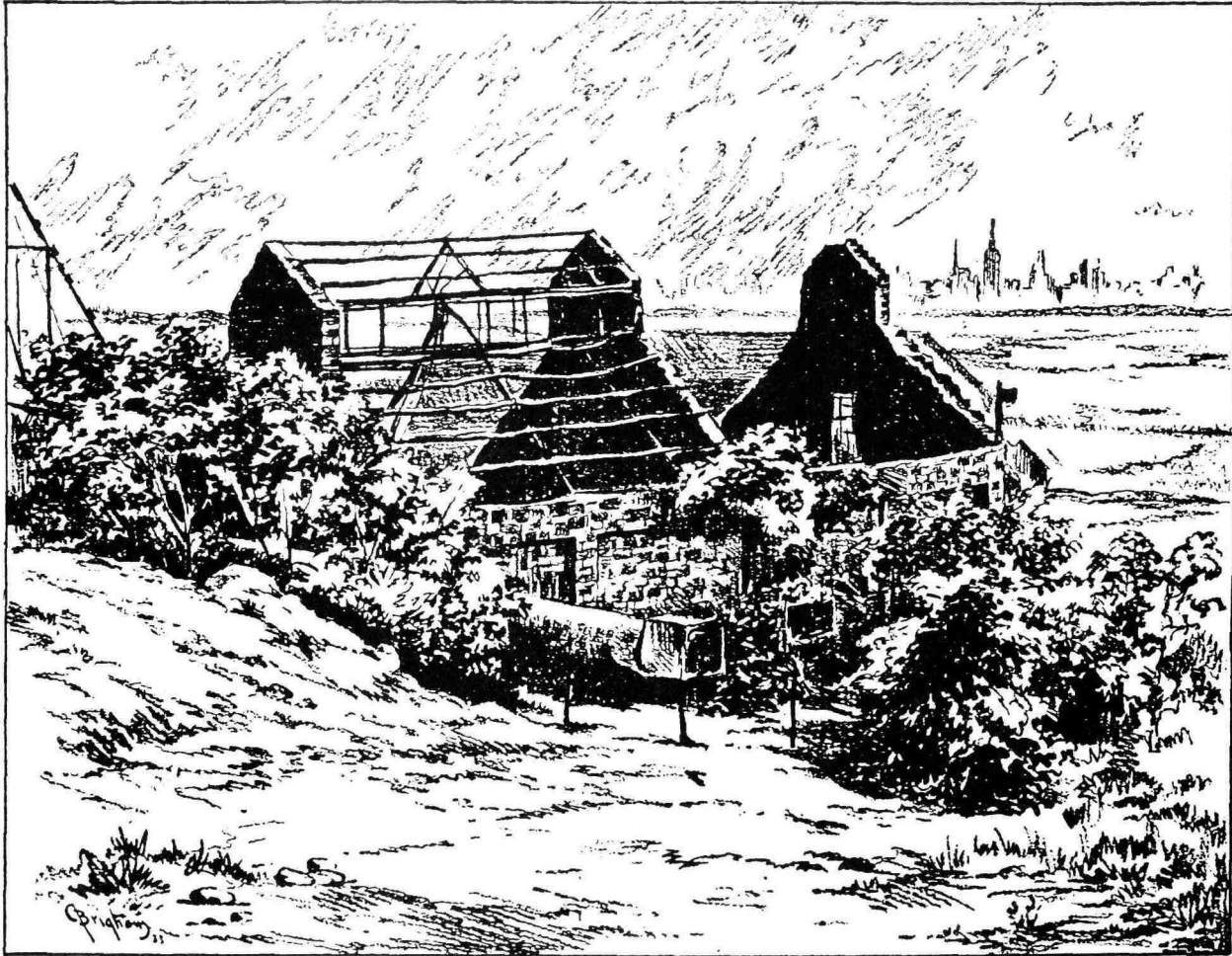


## OLD COPPER MINE



**S**CHUYLER'S plantation, which old Arent bought early in the 18th century from Edmund Kingsland, comprised all the property which is now Arlington and the land northward along the ridge's eastern slope to Kingsland. The heavy green stone turned up by the negro slave in the field where he was working proved to contain eighty-five per cent pure copper. The discovery opened the road to wealth and independence for Schuyler and was the cause for an important happening in this country—the

bringing of the first steam engine from England. With the engine came Josiah Homblower, its engineer, the father of the afterwards celebrated Chief Justice Homblower. The engine and the mines were destroyed by fire in 1772 and remained unused for several years. Thousands of tons of ore were subsequently mined at a great profit, but the discovery of richer Western mines made further work unprofitable. Rich in tradition, on the scene of Revolutionary War engagements, the old mine is now dark and overgrown.