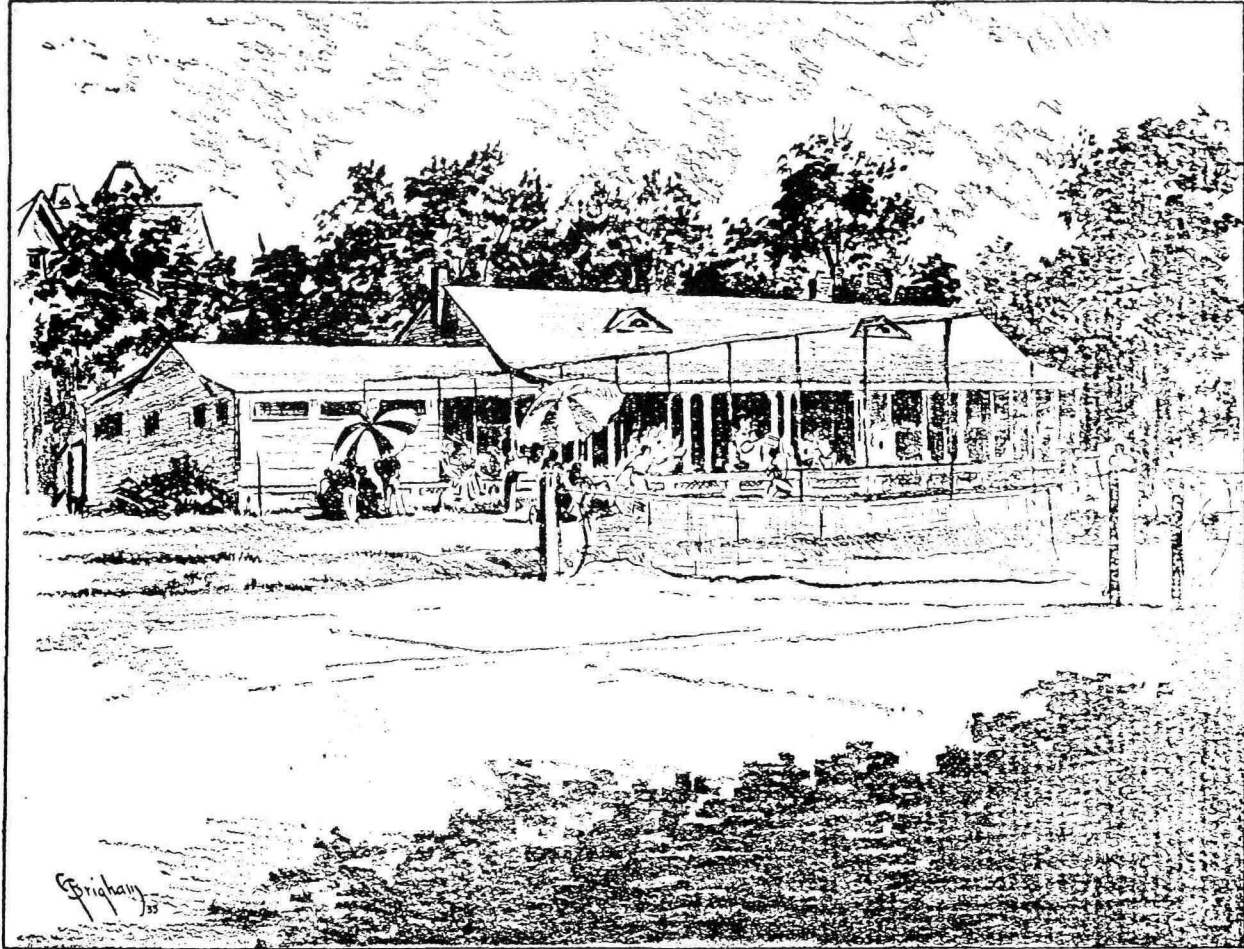


ARLINGTON PLAYERS' CLUB



FORMED in 1911, the Arlington Players' Club is one of the oldest social organizations in town. The first club rooms were in the back of the First National Bank building, the club occupying them from 1914 to 1919. In this year the members joined with the old Arlington Tennis Club, which at that time owned a small shack on the ground where the present club house now stands. Plans for a new building were made, and in 1921 the quarters were completed. The structure remains as it was with

the exception of an addition made a few years ago. The club house is a comfortable place comprising a large social room, a handball court, steward's quarters and kitchen, men's and women's locker rooms and showers. Starting with five poorly kept tennis courts, the club now has seven clay courts that rank in playing surface with any in this part of New Jersey. The club was formed to study dramatics, and for some years the Players' Club presentations were the high-spots of the season. This activity has given way to tennis.