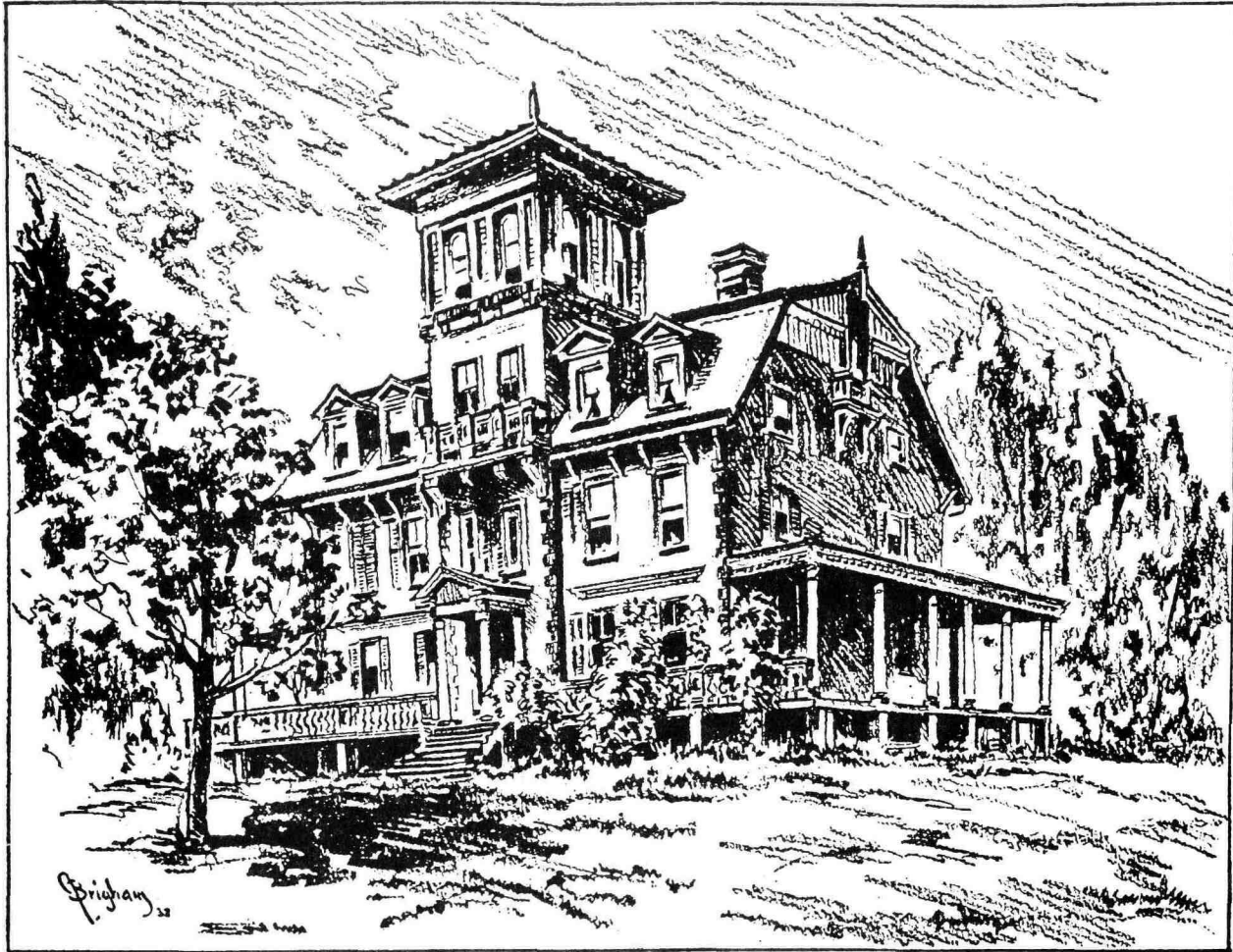


SCHUYLER MANSION



IT was 1710. Good Queen Anne was on the throne of England. Napoleon had not yet been born; America was a barbarous country and New Jersey was subject to the British Crown. Old Peter Schuyler, whose lands comprised what is now Belleville, Kearny, Arlington, Lyndhurst and Kingsland, picked out a spot bounded by the Passaic River and the Belleville Turnpike. On this gently rolling, heavily wooded ground he built his manor house. Constructed of stone and bricks especially imported from

Holland, each brick wrapped separately in straw, the mansion stood a venerable monument, until 1924, a space of two hundred and fourteen years. When it was torn down by a development company, many people wished it preserved as an historical relic, for it was one of the few genuine Washington headquarters in this vicinity. The company offered to deed a section of sixty acres to any historical society that would pay for the upkeep of the place. None was able to do so, and the fine old house fell under the housewreckers' hammers.